

Tidal Lagoons at Swansea Bay, Cardiff and Newport, 2012 – ongoing

- Cotswold Archaeology is the retained archaeologist
- Consultancy role on both marine and terrestrial cultural heritage
- Liaison with Welsh and English curatorial bodies
- Production of WSIs, method statements, Preliminary Environmental Information (PEI), Scoping Reports, Environmental Impact Assessment (EIA), complex mitigation strategies and marine and terrestrial GIS mapping
- Support for marine licence applications and Development Consent Order (DCOs)



Dive team with gun carriage recovered from the wreck of the London (1665)

Morecambe Bay subsea tunnel, 2016 – ongoing

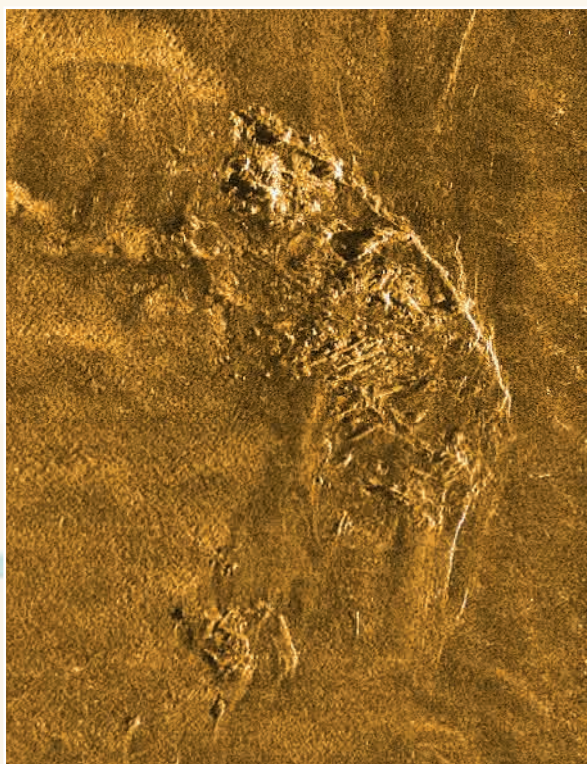
- Assessment of geophysical and geotechnical survey data
- Provision of consultancy advice on WSI and PAD

Specific archaeological re-assessment of three designated sites - Langdon Bay, Dover; Brighton Marina; and the Hanover, Cornwall, 2016 – ongoing

- Geophysical and diver surveys on three designated sites
- Re-evaluation of significance of the wreck sites
- Input on future management of sites

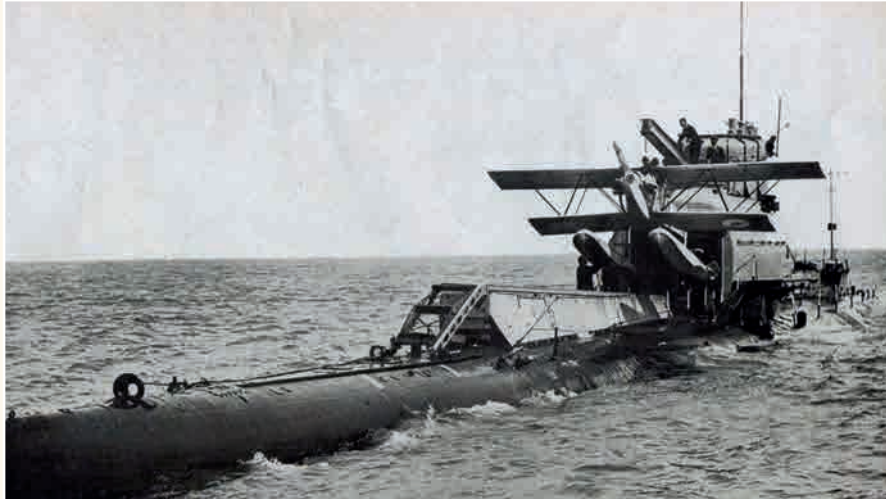
Marine excavation and publication of *the London*, a 17th-century shipwreck, Thames estuary, 2014 – ongoing

- Archaeological evaluation of a significant 17th century warship
- Excavation of the wreck and recovery of artefacts at risk
- Post-excavation analysis and conservation of artefacts
- Detailed geophysical and bathymetric survey including side scan sonar and sub-bottom profiling
- Creation of 3D virtual trail for non-divers
- Production of conservation management plan



Side scan image of the wreck of the London (1665)

British submarine HMS M2



Heritage asset management in relation to marine designation: Scottish, Welsh and Northern Irish waters, 2013 – 2015

- Diver surveys of some of Scotland's most significant wreck sites
- Geophysical and diver surveys of designated and non-designated wreck sites in Wales
- Archival research into WWI shipwrecks in Northern Irish waters
- A large scale research project into the Clyde-built shipwrecks of the Clyde

Strategic Assessment of Submarines in English Waters, 2013 – 2014

- A thematic assessment of all known submarine wrecks in English waters
- Historic and contextual research and GIS analysis
- A bespoke database and report to aid in management of the sites.

Navitus Bay Wind Farm, Isle of Wight 2012 - 2014

- EIA of onshore cultural heritage assets
- Cultural heritage settings assessment within the ZTV

Beatrice Offshore Wind Farm, Scotland, 2015 – ongoing

- Ongoing consultancy advice
- Revision of WSI and PAD
- Removal of AEZs following ground-truthing survey

IFA2 – Interconnector France Angleterre 2016

- Ongoing advice in relation to the ES chapter and the archaeological assessment of geophysical survey data
- Support for the Marine Licence and Planning applications



Offshore wind farm turbines